



## Design and Simulation of a Traffic Light Management System

<sup>1</sup>Danladi King Garba, <sup>2</sup>Muhammad Ahmad Baballe\*

<sup>1,2</sup>Department of Mechanical Engineering, Nigerian Defence Academy (NDA), Kaduna, Nigeria.

DOI: [10.5281/zenodo.10810739](https://doi.org/10.5281/zenodo.10810739)

Submission Date: 24 Jan. 2024 | Published Date: 13 March 2024

\*Corresponding author: [Muhammad Ahmad Baballe](mailto:muhammad.ahmad.baballe@nada.gov.ng)

Department of Mechanical Engineering, Nigerian Defence Academy (NDA), Kaduna, Nigeria.

ORCID: [0000-0001-9441-7023](https://orcid.org/0000-0001-9441-7023)

### Abstract

Batteries are used to power the whole system, and if they go down, you can also charge them. There is also a switch on the system that is used to power it on or off. In this research, the four lanes of traffic are named lane A, lane B, lane C, and lane D. There is a wireless system that is used to control the four lanes in case you decide not to use the control button on the system. The buttons are also labeled A, B, C, and D. Also on the wireless system, it is labeled A, B, C, and D, indicating the four lanes of the research. If there is an emergency in lane D and lane A is the one that is working or giving permission to go, you can use either the control switch from the system or the wireless control system to give lane D permission to go. If the cars in the lane, which is D, have passed, then they will automatically go back to the lane in which they are operating, which is lane A. If all the cars have finished passing in lane A, they will then go to lane B, lane C, and lane D and return to lane A again.

**Keywords:** LEDs, Simulation, Arduino, Radio Frequency Module (RF), Vehicles, Management.

## I. INTRODUCTION

In order to manage conflicting traffic flows, traffic lights—also referred to as traffic lamps or traffic signals—are signaling devices placed at road intersections, pedestrian crossings, and other sites. Due to their inability to adjust to changing road conditions, traditional traffic signal systems, which operate on set cycles, can be a major cause of traffic congestion. Because they make it take longer for people to get where they're going, traffic bottlenecks are bad for both drivers and other road users. Ambulances and police cars are examples of emergency vehicles that could be seriously endangered by this delay. Using dynamic traffic lights—whose functioning changes depending on the traffic conditions at the intersection—is one important way to alleviate traffic congestion at intersections. Since there aren't many scholars in the literature interested in finding solutions to emergency vehicle traffic jam problems, this paper's contribution is the introduction of a revolutionary traffic signal system operation strategy. Two algorithms make up the new strategy: a pure operation mode and a hybrid operation mode. The goal of these operation modes is to shorten the time emergency vehicles must wait at junctions. They make the assumption that an Internet of Things (IoT)-based smart infrastructure system exists that can recognize the arrival of emergency vehicles at a crossroads. The traffic signal operation is changed from fixed cycle mode to dynamic mode by the smart infrastructure system. In order to shorten the time that emergency vehicles must wait at junctions, the dynamic mode controls the traffic signals. The suggested algorithms are simulated in the study, which also emphasizes their benefits. We contrasted our method with the conventional traffic light system and the Wen algorithm found in the literature in order to assess the effectiveness of the new strategy. According to our evaluation study, the suggested algorithms performed better in various traffic circumstances than both the old system and the Wen approach [10]. The traffic light system is controlled by numerous studies. A portion of these techniques included hardware, such as logic circuits and controllers, and were static. These systems don't consider the flow of traffic when opening and closing the traffic light; instead, they rely mostly on a static, continuous time. To forecast the quantity of automobiles or the state of the traffic jam in each direction, several techniques were created [1]. An introduction to the use of fuzzy logic for traffic light control is provided by Study [2]. In this study, the number of automobiles, the length of the queue, and the width of the road are the criteria used by the researchers to manage the cars as a prioritized queue. The green lights that indicated an empty wait were eliminated during the construction of the fuzzy system. When compared to standard light control systems, the outcome was superior. Researchers discuss the approaches utilized in traffic light system control in-depth in the study [3]. TST and TSC were the primary scopes of many of the searches. While some

searches rely on a single parameter, others rely on a set of parameters. The traffic light condition, the length of each light, the required shade of green, the manner in which cars are waiting, the calibration between these cars, and several other significant characteristics are the primary parameters that these systems use. More than 77% of all queries, according to the search, involve the use of simulation tools. Green time, cycle length, phase sequence, change interval, and offset were the primary timing constants. An interview regarding the development of a smart traffic signal system by artificial intelligence is provided in Study [4]. Whether the car weighs more or less than eighty tons is a major factor in this system's operation. This study makes use of Google Earth traffic data; longer travel times are associated with higher traffic intensities. There was an emergency, and cameras were deployed. A software program for modeling logic simulation was used to assess the suggested system. This technology was able to raise the speed of cars to 55% and decrease the number of cars in a given amount of time to 55%. reducing by 29% the number of automobiles that need to wait and by 38% the amount of time that drivers must wait to cross junctions. Researchers attempt to address the issue of junctions passing on 4-way highways in the study [2]. This study considers vehicle and autonomous vehicle communication in addition to standard characteristics. Sensors, computation, and future car predictions were used to detect cars. According to research, establishing traffic as a network can help reduce traffic issues and provide effective control over traffic signals. Reinforcement training was employed by researchers to manage traffic signals in study [4]. Every study under this scope requires at least two intersections. Natural language processing is used in this study to provide the best answer. This investigation found that more than 160 articles used RL approaches to produce the greatest results. The traffic signal systems were controlled using a variety of techniques, including deep learning and machine learning. The primary benefit of the fuzzy logic approach is its speed in comparison to neural networks, which have a large processing overhead and might not operate instantly. Using historical data, neural networks attempt to forecast the number of automobiles. Although the image processing system can provide real-time data for fuzzy logic to process. The concept made it possible for the system to function in real time, displaying changes in the number of automobiles, the traffic light's response to each variation in the car's number, and the movement of the street directions. Similar to this, the image processing system adds value to the system, particularly in cities with heavy traffic, which can also reduce the likelihood of accidents and delays in time. This system can be designed to treat ambulances as a third fuzzy set, with the requirement that they open on the street instantly at the top priority, a medium priority with fire engines and police cars, and a lowest priority with other vehicles [5]. Traffic light control systems are used for particular lanes or crossings in metropolitan areas, while fixed cycle traffic lights are usually used to regulate traffic on the roads. Additionally, improper installation can lengthen the time it takes for traffic to clear junctions and result in excessively long wait times for crossing traffic, which can strand emergency vehicles at intersections. By lowering energy consumption and traffic delay, adaptive signal timing management is a technology that can enhance network-wide traffic operations and is more computationally feasible than existing fixed-cycle signal control systems. Despite the existence of specialized adaptive control systems, emergency vehicles cannot be contacted, which is a critical component of smart cities. This issue led to the creation of a unique framework called Emergency Vehicle Adaptive Traffic Lights (EVATL) for smart cities. EVATL combines emergency vehicle communication with an adaptive traffic light mode to improve traffic signal performance and decrease total traffic delay. EVATL uses GPS and the Internet of Things (IoT) to locate emergency vehicles. It interfaces with traffic lights and uses YOLOv8 to operate adaptively based on vehicle density at the traffic signal. Thus, the main objective of the suggested EVATL is to incorporate adaptive traffic signals for smart cities and prioritize an emergency vehicle at the same time. By building several scenarios for an adaptive traffic light and emergency vehicle communication, a graphical user interface (GUI) is created to assess the suggested model. When examining the simulation results of the suggested model EVATL, it is evident that the prompt identification of an emergency vehicle at a predetermined distance significantly reduces the wait time of cars at a traffic signal [6]. This work presents a smart traffic management system that makes use of the Internet of Things (IoT) [17, 22] to help authorities plan more effectively and handle a range of traffic management difficulties. An algorithm is used to efficiently handle various traffic circumstances, and a hybrid strategy—a blend of centralized and decentralized methods—is used to optimize road traffic flow. To do this, the system uses data on traffic density from cameras, sensors, and other devices to modify traffic signals. An alternative artificial intelligence-based technique is used to predict future traffic density in order to lessen traffic congestion. Furthermore, RFIDs [12, 13, 20] are used to prioritize emergency vehicles, such as ambulances and fire brigade vehicles, during a traffic gridlock. This system's component for detecting a fire on the road also includes smoke sensors [19, 21]. To demonstrate the value of the suggested traffic management system, a prototype is developed that not only facilitates better traffic flow but also establishes a connection between neighboring rescue departments via a centralized server. It also gathers useful information that is displayed graphically, which may benefit the government in the future when designing roads [7]. The population growth and rising car ownership in developing countries like India have led to an increase in traffic congestion and accidents [14, 15, 16, 18]. However, a smart traffic control system that uses RFID sensors can lessen these issues by recognizing congested areas and improving traffic flow. This method also enables emergency vehicles to get at their destination more swiftly by granting them priority. The realtime data provided by RFID sensors can also be advantageous to drivers as it can reduce idle time and save them money. Using this information, alternate routes can be suggested to drivers, allowing them to avoid congested areas and reduce the amount of time they spend trapped in traffic. This not only improves traffic flow but also helps reduce pollutants and fuel consumption, making the environment cleaner and greener. Emerging countries like India can employ

a smart traffic control system with RFID sensors to regulate the increasing traffic flow and reduce traffic accidents. In rising nations like India, an RFID-based smart traffic control system has the potential to greatly enhance the welfare of road users, the economy, and the environment [8]. Using the minimal distance triggering mechanism, the dynamic navigation system and smart traffic light assess the movement of emergency vehicles. In the modern world, traffic congestion is a big problem that causes a lot of chaos and losses to both the economy and people's quality of life. The issues associated with traffic become much more significant when we consider emergency vehicles, including ambulances. In order to reduce travel time, ambulances nowadays frequently drive past intersections carelessly (for example, by speeding past a T junction without considering the risk factors), which raises the possibility that the ambulance will be involved in an accident. The traffic signals in the existing system follow a predefined sequence of green lights; that is, the lights don't turn green until the signal's predetermined timing limit is reached. This system's inability to account for emergency vehicles lowers the system's overall efficiency. Through our project, this static system is altered to become efficient and real-time (i.e., dynamic). First, Proteus DS is used to simulate the primary hardware, which will be a retrofit table system for the existing static time-based traffic system. Second, an Android Studios app is created to control the traffic signal. Thirdly, the desired cloud platform (AWS, Google Cloud, or Microsoft Azure) will be used to construct a web application. In [9], [11].

## II. MATERIALS AND METHOD

2.1. The materials used in this research are shown in Table I below.

Table I: materials used in this research

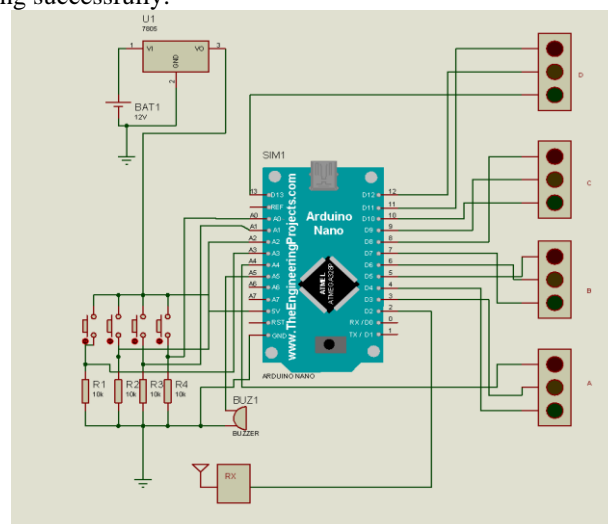
S/N	Name of components	Number used
1	Arduino nano	1
2	Radio Frequency (RF)	1
3	Light Emitting Diodes	15
4	Batteries	3
5	Capacitors	2
6	Switch	2

### 2.2. Method

Batteries are used to power the whole system, and if they go down, you can also charge them. There is also a switch on the system that is used to power it on or off. In this research, the four lanes of traffic are named lane A, lane B, lane C, and lane D. There is a wireless system that is used to control the four lanes in case you decide not to use the control button on the system. The buttons are also labeled A, B, C, and D. Also on the wireless system, it is labeled A, B, C, and D, indicating the four lanes of the research. If there is an emergency in lane D and lane A is the one that is working or giving permission to go, you can use either the control switch from the system or the wireless control system to give lane D permission to go. If the cars in the lane, which is D, have passed, then they will automatically go back to the lane in which they are operating, which is lane A. If all the cars have finished passing in lane A, they will then go to lane B, lane C, and lane D and return to lane A again.

## III. RESULT

The program was written in the Arduino IDE integrated development environment, debugged from the C language into machine code (a hex file) and then simulated in the PROTEUS ISS professional and tested. The written and debugged program (HEX file) was loaded into the Arduino microcontroller. After loading the program, it was tested on Proteus software and found to be working successfully.



## IV. CONCLUSION

Numerous publications have been studied for this research, and their technological advancements have been observed. The system's simulation result has been evaluated and confirmed to function well; putting the system into place will help save lives and ease traffic congestion.

## REFERENCES

1. D.Patel, & Y.Rohilla, ,"Infrared sensor based self–adaptive traffic signal system using arduino board". In 2020 12th International Conference on Computational Intelligence and Communication Networks (CICN) (pp. 175-181) IEEE., 2020, September, doi: 10.1109/cicn49253.2020.9242560
2. M.jha, SH. shukla," design of fuzzy logic traffic controller for isolated intersections with emergency vehicle priority system using matlab simulation" <https://arxiv.org/ftp/arxiv/papers/1405/1405.0936.pdf>.
3. A.Nigam., M.Chaturvedi, & S.Srivastava ,"An Empirical Study on Parameters Affecting Traffic Stream Variables Under Rainy Conditions". In 2022 14th International Conference on COMmunication Systems & NET work S (COMSNETS) (pp. 818-823). IEEE. 2022, January.
4. S. komsiyah,, E. desvania, "traffic lights analysis and simulation using fuzzy inference system of mamdani on threesignaled intersections"., science direct journal, volume 179, 2021, pages 268-280, <https://doi.org/10.1016/j.procs.2021.01.006>.
5. R. T. Gdeeb, "A Controlling Traffic Light system using Fuzzy logic", Journal of Al-Qadisiyah for Computer Science and Mathematics Vol. 15(3) 2023, pp Comp. 141–153.
6. A. Dodia, et al., "EVATL: A novel framework for emergency vehicle communication with adaptive traffic lights for smart cities", IET Smart Cities, 2023, 1–15, [wileyonlinelibrary.com/journal/smc2](http://wileyonlinelibrary.com/journal/smc2).
7. J. D. Reddy, et al., "AI Based Smart Traffic Management", International Journal of Scientific Research in Engineering and Management (IJSREM), Volume 07, Issue 07, 2023.
8. D. Adhwanth, et al., "Rfid Based Traffic Control System for Emergency Vehicle", International Journal of Engineering Technology and Management Sciences, Issue 3, Volume No.7, May - June – 2023, DOI:10.46647/ijetms.2023.v07i03.034.
9. N. Raghu, et al., "Smart Traffic Light and Dynamic Navigational System for Emergency Vehicles", 2022, at: <https://www.researchgate.net/publication/364049958>.
10. Y. Tashtoush, M. Al-refai , G. Al-refai, N. Zaghal, D. Darweesh, O. Darwish, "Dynamic Traffic Light System to Reduce The Waiting Time of Emergency Vehicles at Intersections within IoT Environment", International Journal of Computers Communications & Control Online, ISSN 1841-9844, ISSN-L 1841-9836, Volume 17, Issue 3, June, 2022, <https://doi.org/10.15837/ijccc.2022.3.4482>.
11. M. A. Baballe, U. F. Musa, Y. A. Ohiani, & Mustapha B. A. (2023). Faults and Solutions for Smart Traffic Lights. Global Journal of Research in Engineering & Computer Sciences, 3(5), 36–40. <https://doi.org/10.5281/zenodo.10050434>.
12. M. B. Ahmad, F. A. Nababa," A comparative study on radio frequency identification system and its various applications", International Journal of Advances in Applied Sciences (IJAAS) Vol. 10, No. 4, December 2021, pp. 392–398 ISSN: 2252-8814, DOI: 10.11591/ijaas.v10.i4.pp392-398.
13. M A. Baballe," A Study on the Components used in RFID System and its Challenges", Global Journal of Research in Engineering & Computer Sciences Volume 01| Issue 01 | Sep-Oct | 2021 Journal homepage: <https://gjrpublication.com/journals/>.
14. A. S. Bari, M. A. Falalu, M. A. Umar, Y. Y. Sulaiman, A. M. Gamble, & M. A. Baballe. (2022). Accident Detection and Alerting Systems: A Review. Global Journal of Research in Engineering & Computer Sciences, 2(4), 24–29. <https://doi.org/10.5281/zenodo.7063008>.
15. M.A.Baballe, Aminu Ya'u, S.F.Ibrahim, Abdulmuhamin M., & N.K.Mustapha. (2023). Accident Detection System with GPS, GSM, and Buzzer. Global Journal of Research in Engineering & Computer Sciences, 3(1), 8–14. <https://doi.org/10.5281/zenodo.7655016>.
16. M. A. Baballe, A. S. Bari, A. L. Musa, N. K. Mustapha, U. H. Hussain, D. Bello, & A. A. Umar. (2022). Car Tracking System: Pros and Cons. Global Journal of Research in Humanities & Cultural Studies, 2(5), 188–191. <https://doi.org/10.5281/zenodo.7102272>.
17. Z. Abdulkadir, A. Ibrahim, A. Muhammad, \*M. A. Baballe, S. A. Sani," Contribution of the IoT to the Security System", Global Journal of Research in Engineering & Computer Sciences ISSN: 2583-2727 (Online) Volume 03| Issue 04 | July-Aug. | 2023 Journal homepage: <https://gjrpublication.com/gjrecs/>.
18. Abdulrahman Y.A., M. I. Bello, S.A. Sani, A. Ibrahim, & M. A. Baballe. (2023). Fire Extinguisher types and Applications. Global Journal of Research in Engineering & Computer Sciences, 3(4), 45–50. <https://doi.org/10.5281/zenodo.8286527>.
19. Amina I., Sadiku A. S., Muntaka D., Abdulmuhamin M., & M. A. Baballe. (2023). Modern Alarm Sensors for Security Systems. Global Journal of Research in Engineering & Computer Sciences, 3(4), 11–15. <https://doi.org/10.5281/zenodo.8193716>.

20. M. B. Ahmad, F. A. Nababa, “The need of using a Radio Frequency Identification (RFID) System”, International Journal of New Computer Architectures and their Applications (IJNCAA) 11(2): 22-29 The Society of Digital Information and Wireless Communications.
21. M. B. Ahmad, “The Various Types of sensors used in the Security Alarm system”, International Journal of New Computer Architectures and their Applications (IJNCAA) 9(2): 50-59 The Society of Digital Information and Wireless Communications.
22. M. Çavaş, M. B. Ahmad, “A Review Advancement of Security Alarm System using Internet of Things (IoT)”, International Journal of New Computer Architectures and their Applications (IJNCAA) 9(2): 38-49 The Society of Digital Information and Wireless Communications.

#### **CITATION**

D.K Garba, & M. A Baballe. (2024). Design and Simulation of a Traffic Light Management System. In Global Journal of Research in Engineering & Computer Sciences (Vol. 4, Number 2, pp. 1–5).  
<https://doi.org/10.5281/zenodo.10810739>